

**ANTIBIOTIC RESISTANCE, MECA GENE DETECTION, AND BIOFILM FORMATION ABILITY AMONG COAGULASE-NEGATIVE STAPHYLOCOCCI IN CANCER PATIENTS**DILSHA TK<sup>1</sup>, SAJANI SAMUEL<sup>2\*</sup>, PARTHIBAN RUDRAPATHY<sup>2</sup>, SARAVANAN MURUGESAN<sup>2</sup>, AND SARATH KE<sup>2</sup><sup>1</sup>Department of Biotechnology, M S Ramaiah University of Applied Sciences, Bangalore, Karnataka, India. <sup>2</sup>Department of Clinical Laboratory Services and Translational Research, Microbiology Division, Malabar Cancer Centre, Kannur, Kerala, India.  
Email: shyni.samuel123@gmail.com

Received: 21 October 2021, Revised and Accepted: 08 December 2021

**ABSTRACT**

**Objective:** The objective of the study was to identify coagulase-negative staphylococci (CoNS) from various clinical samples and to determine the antibiotic resistance of the isolates by means of automation (VITEK-2), as well as to detect biofilm formation using Congo red agar method and to detect *mecA* gene by automated identification method (VITEK-2).

**Methods:** All the clinical samples (blood, urine, sputum, BAL, throat swab, wound swab, aspirated fluid, pleural fluid, and pus) received in the microbiology laboratory were processed by aseptic techniques. Clinical samples were inoculated on appropriate media (blood agar, MacConkey agar, and chocolate agar [HIMEDIA]). After inoculation, the culture plates were incubated at 37°C aerobically for 18–24 h for growth. Positive cultures were picked up and further bacterial species identification was done using automated techniques (MALDI-TOF).

**Results:** Among 28 isolates, the most recurrent strains of CoNS are *Staphylococcus epidermidis*, *Staphylococcus hominis*, *Staphylococcus lugdunensis*, and *Staphylococcus haemolyticus*. The assessment of antibacterial drugs sensitivity shows that all the isolates were more sensitive to daptomycin (*S. epidermidis* 100%, *S. hominis* 100%, *S. lugdunensis* 100%, and *S. haemolyticus* 42.85%) followed by linezolid (*S. epidermidis* [69.23%], *S. hominis* [100%], *S. lugdunensis* [100%], and *S. haemolyticus* [57.14%]) and vancomycin (*S. epidermidis* [100%], *S. hominis* [40%], *S. lugdunensis* [100%], *S. haemolyticus* [42.85%]). The analysis revealed the presence of the *mecA* gene (67.85%) and biofilm production (85.71%), respectively.

**Conclusion:** Our data indicate that the hospital environment can be colonized by biofilm forming CoNS and transmission of these strains can cause an increased risk of serious nosocomial infections.

**Keywords:** Coagulase-negative bacteria, Biofilm, Nosocomial infection.

© 2022 The Authors. Published by Innovare Academic Sciences Pvt Ltd. This is an open access article under the CC BY license (<http://creativecommons.org/licenses/by/4.0/>) DOI: <http://dx.doi.org/10.22159/ajpcr.2022v15i1.43416>. Journal homepage: <https://innovareacademics.in/journals/index.php/ajpcr>

**INTRODUCTION**

*Staphylococcus aureus* is a common source of nosocomial infection in hospitals. A wide variety of pathogens is highly laden in hospital environment and the most frequent nosocomial infections are infections of surgical wounds, urinary tract infections, and lower respiratory tract infections. Staphylococci are the important pathogenic bacteria responsible for a variety of diseases in humans and other animals [1]. Staphylococci are usually divided into two groups based on their ability to produce coagulase, an enzyme that clots blood plasma. The most common pathogen in the genus is coagulase-positive *S. aureus*, which causes deep infections such as septic arthritis, endocarditis, osteomyelitis, pneumonia, and skin infections. Several nosocomial infections such as heart valves, pacemaker lines, boxes, cerebrospinal shunts, and prosthetic joints are considered as significant pathogens of coagulase-negative staphylococci (CoNS).

Methicillin is a narrow-spectrum beta-lactam antibiotic of the penicillin class developed in 1959 that was previously used to treat infections caused by beta-lactamase-producing *S. aureus*. Methicillin has recently been renamed methicillin to comply with European law [2]. Methicillin resistance has emerged in most strains of the bacteria (*Staphylococcus epidermidis*, *S. saprophyticus*, *Staphylococcus haemolyticus*, *Staphylococcus hominis*, and another 49 species), and they are known as methicillin-resistant CoNS (MR-CoNS), is a major health concern. In *Staphylococcus* species, methicillin resistance results from the recombinase-mediated insertion of a mobile genetic element that carries *mecA* and various antibiotic resistance genes called *Staphylococcal* chromosomal cassette *mec*, the acquisition of the *mecA* gene, which produces a mutated penicillin-binding protein 2a with a

low binding affinity for all beta-lactam antibiotics, causes resistance in MRSA and MR-CoNS. The potent inducer of the *mecA* regulatory system is cefoxitin and it is widely used as a surrogate marker for the detection of *mecA* gene-mediated methicillin resistance [1]. Multicellular communities of bacteria are called biofilms. Various biotic and abiotic surfaces are attached to an extracellular polymeric matrix produced by the bacteria [3].

CoNS are becoming more common as medical research advances, particularly with the increased use of medical equipment. It is critical to characterize CoNS at the species level, as well as their antimicrobial capabilities and biofilm development, to diagnose and treat it. As a result, the current investigation will be studied to establish the species distribution, antimicrobial susceptibility, biofilm formation, and *mecA* gene detection of CoNS causing infections in cancer patients at our center.

**METHODS**

The study was conducted among cancer patients in the microbiology division of a tertiary cancer center. It is a hospital-based cross-sectional study that was carried out among 645 specimens from medical, surgical, and allied superspecialty units. The factors such as sex, age, date of admission, and diagnosis were also recorded. This study was carried out for 3 months from June 2021 to August 2021.

**Sample collection**

All the clinical samples (blood, urine, sputum, BAL, throat swab, wound swab, aspirated fluid, pleural fluid, and pus) received in microbiology laboratory during the study period were taken for the study.

Specimens received in the microbiology laboratory were subjected to Gram stain followed by inoculation on blood agar and Chocolate agar aseptically. The inoculated culture plates were incubated at 37°C for 18–24 h. After reading and interpreting the culture results, the clinically significant isolates were identified using standard methods.

**Diagnostic criteria for the identification of isolates**

The isolates were identified by Gram stain, colony morphology and species identification were done by MALDI-TOF. Antimicrobial susceptibility was done following CLSI guidelines. Biofilm formations were detected using Congo red agar method.

**Antimicrobial susceptibility testing by VITEK 2**

VITEK2 is a fully automated system for bacterial identification and susceptibility testing using fluorescence-based technology. For organism identification, fluorogenic methodology is used and for susceptibility testing, turbidimetric methods used by a 64-well card that is barcoded with information on card type, expiration date, dot number, and unique card identification number [4].

Bacteria which showed methicillin resistance were checked for mecA gene detection with VITEK2 [5].

**Biofilm production by Congo red agar (CRA) method**

CRA method is a qualitative assay for the detection of biofilm producer microorganism, as a result of color change of colonies inoculated on CRA method. All the CoNS were subjected for biofilm production by CRA method [6].

**RESULTS AND OBSERVATIONS**

A total of 645 specimens were collected in the Microbiology Division of Malabar Cancer Centre during the study period out of which 152 (23.5%) isolates showed culture positive (Table 1 and Fig. 1).

Microbial etiology of specimens was studied, based on groups, Gram-positive cocci (GPC) were found as 64 (42.10%) (Table 2 and Fig. 2).

Among GPC, 28 (43.75) were CoNS. *S. epidermidis* were responsible for 13 (46.42%) of infections, followed by *S. haemolyticus* 7 (25%), *S. hominis* 5 (17.85%), and *S. lugdunensis* 3(10.71) (Table 3 and Fig. 3).

CoNS can cause infection at any age, however, prevalence was high among elderly age group (41–50 age) which showed 25% (Table 4 and

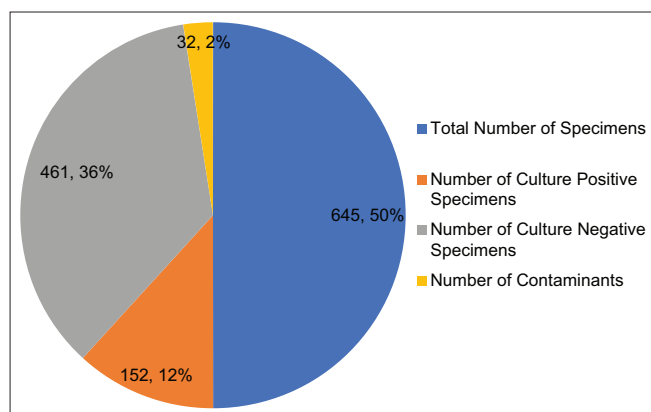


Fig. 1: Culture results of specimens

Table 1: Culture results of specimens

Total number of specimens	Number of culture-positive specimen (%)	Number of culture-negative specimens (%)	Number of culture contaminants (%)
645	152 (23.5%)	461 (71.4%)	32 (4.9%)

Fig. 4). Among sex-wise distribution, males showed high prevalence (57.1%) compared to females (Table 5 and Fig. 5).

We had maximum CoNS in pus sample 39.28%, followed by blood 25%, axillary swab 14.28%, urine 7.14%, nasal swab 7.14%, and sputum 7.14% (Table 6 and Fig. 6).

Antibiotic susceptibility pattern of all CoNS showed that all mecA gene producers (*S. epidermidis*, *S. hominis*, *S. haemolyticus*, and *S. lugdunensis*) were multidrug resistant. However, significant isolates *S. epidermidis* 100%, *S. hominis* 100%, *S. haemolyticus* 42.85%, and *S. lugdunensis* 100% were more susceptible to daptomycin followed by linezolid (*S. epidermidis* 69.23%, *S. hominis* 100%, *S. haemolyticus* 57.14%, and *S. lugdunensis* 100%) and for vancomycin, the susceptibility was *S. epidermidis* 100%, *S. hominis* 40%, *S. haemolyticus* (42.85%), and *S. lugdunensis* (100%) (Table 7). However, the study shows that from the antibiotic tested, daptomycin can be the drug of choice.

All the isolates were looked for mecA gene detection, among which 67.85% showed positive for mecA gene (Table 8).

Among biofilm producers, 58.33% were *S. epidermidis*, followed by *S. haemolyticus* 16.66%, *S. hominis* 12.5%, and *S. lugdunensis* 12.5% (Table 9 and Fig. 7).

**DISCUSSION**

CoNS are opportunistic pathogens that are a common cause of nosocomial infections. Because these organisms were a normal flora on the skin, they were long regarded non-pathogenic. However, from recent two decades, they are considered as significant pathogens due to increase in medical devices. In addition, CoNS have started to develop resistance to various antimicrobial agents which are difficult to treat.

In the present study out of 64 (42.10%) GPC isolated, 28 were CoNS. Using MALDI-TOF, the isolates were identified as *S. haemolyticus*, *S. lugdunensis*, *S. epidermidis*, and *S. hominis*. The findings of the present study were in agreement with various studies which showed *S. epidermidis* as the most common coagulase-negative staphylococci. In contrast, a finding of Jain et al. [7] showed that the most common pathogenic isolate were *S. haemolyticus* (58%) as followed by *S. epidermidis* (19%).

The underlying risk factors which are associated with CoNS infection include age. In our study, 41–50 age groups showed more prevalence. A similar study showed that CoNS infection was maximum at the age group between 21 and 30, that is, 25%.

Our study also showed that males (57.1%) were more infected than females (42.85%). These results were in consistent with a study Munda et al., 2009 [8], which showed out of 60 coagulase negative Staphylococcus reported 53.33% were reported in males while the remaining 46.67% were in females [9].

In our study, maximum number of CoNS were observed in pus samples (39.28%). A similar study from Haryana showed that maximum number of CoNS were isolated in urine samples (41.75%). The antimicrobial susceptibility of the isolates was tested against 13 antimicrobial drugs in accordance with CLSI guidelines using VITEK2.

Antimicrobial susceptibility pattern of the isolates showed that daptomycin was more susceptible (*S. epidermidis* 100%, *S. hominis* 100%, *S. lugdunensis* 100%, and *S. haemolyticus* 42.85%) for all the isolates

**Table 2: Microbial etiology of specimens**

Pathogens	Total number of isolates (n=152)	Percentage
Gram-positive cocci	64	42.10
Gram-negative bacilli	86	56.57
Budding yeast	2	1.31

**Table 3: Microbial etiology of coagulase-negative *Staphylococci***

Pathogens	Total numbers	Percentage
<i>S. epidermidis</i>	13	46.42
<i>S. haemolyticus</i>	7	25
<i>S. hominis</i>	5	17.85
<i>S. lugdunensis</i>	3	10.71
Total	28	100

*S. epidermidis*: *Staphylococcus epidermidis*, *S. hominis*: *Staphylococcus hominis*, *S. lugdunensis*: *Staphylococcus lugdunensis*, *S. haemolyticus*: *Staphylococcus haemolyticus*

**Table 4: Age distribution of patients with coagulase-negative *Staphylococci***

Age	Number of patients (n=28)	Percentage
0-10	5	17.85
11-20	1	3.57
21-30	2	7.14
31-40	1	3.57
41-50	7	25
51-60	6	21.42
>60	6	21.42
Total	28	100

**Table 5: Sex-wise distribution of patients with coagulase-negative *staphylococci* infection**

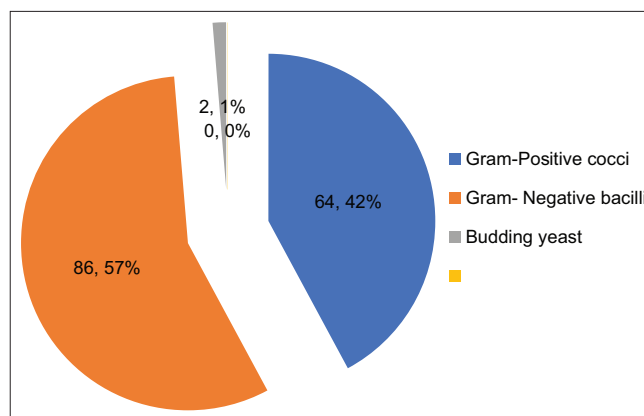
Pathogen (n=28)	Male	Female	Total
<i>S. epidermidis</i>	8	5	13
<i>S. haemolyticus</i>	3	4	7
<i>S. hominis</i>	3	2	5
<i>S. lugdunensis</i>	2	1	3
Total (%)	16 (57.1)	12 (42.85)	28 (100)

*S. epidermidis*: *Staphylococcus epidermidis*, *Staphylococcus hominis*: *S. hominis*, *S. lugdunensis*: *Staphylococcus lugdunensis*, *S. haemolyticus*: *Staphylococcus haemolyticus*

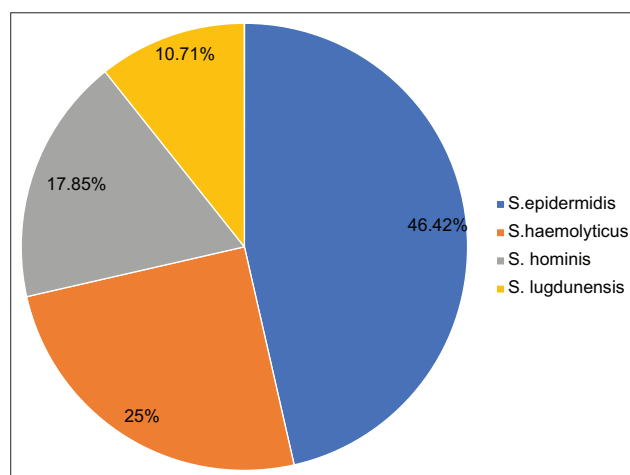
tested. The result of our study is consistent with another research article, Uekötter *et al.*, 2011 [10], however, certain studies showed that vancomycin drug to be more sensitive, Natoli *et al.* [11], observed no resistance to vancomycin. The methicillin-resistant rate in our study was 67.85%, however, the methicillin resistance of CoNS isolated was reported high in Brazil (77%), Colombia (73%), and Egypt (75%), which could be over use of antibiotics which have resulted in CoNS colonization. A study from Malaysia showed that misinterpretation of contaminated cultures let to the emergence of vancomycin resistance staphylococci.

Out of 28 CoNS, 19 were methicillin-resistant staphylococci, similar result 39.4% were found by Khadri and Alzohairy, 2010 [12]. We have observed that the resistant rate to different antibiotics among MR-CoNS strains was higher than those sensitive to methicillin and this finding was similar to Sangwan and Kumari, 2018 [13].

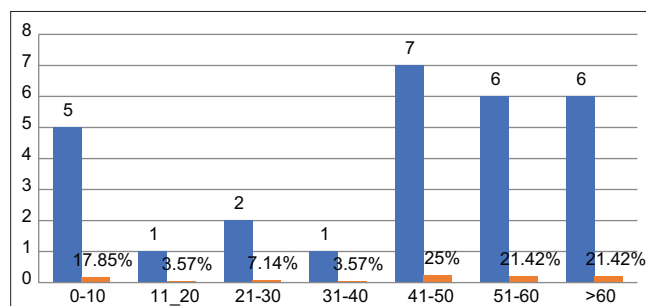
The present study also reveals that 24 isolates were biofilm producers, they were more resistant to antimicrobial agents compared to non-biofilm producers. This result was more similar to the findings reported by Martineau *et al.*, 2016 [9], who found that 90.8% of MR-CoNS were biofilm producers.



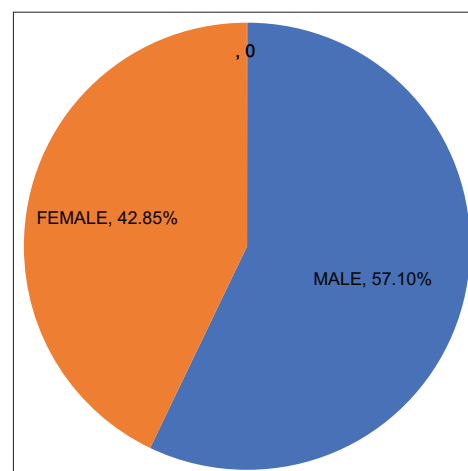
**Fig. 2: Microbial etiology of specimens: Organism based on groups**



**Fig. 3: Microbial etiology of coagulase-negative staphylococci**



**Fig. 4: Age distribution of patients with CoNS infection**



**Fig. 5: Sex-wise distribution of patients with CoNS infection**

**Table 6: Distribution of coagulase-negative staphylococci species in various clinical samples**

Organisms	Urine	Blood	PUS	Nasal swab	Sputum	Axillary swab
<i>S. epidermidis</i>	2	1	8	2	2	3
<i>S. haemolyticus</i>	-	2	1	-	-	-
<i>S. hominis</i>	-	4	-	-	-	1
<i>S. lugdunensis</i>	-	-	2	-	-	-
Total (%)	2 (7.14)	7 (25)	11 (39.28)	2 (7.14)	2 (7.14)	4 (14.28)

*S. epidermidis*: *Staphylococcus epidermidis*, *S. hominis*: *Staphylococcus hominis*, *S. lugdunensis*: *Staphylococcus lugdunensis*, *S. haemolyticus*: *Staphylococcus haemolyticus*

**Table 7: Antibiotic susceptibility testing of coagulase-negative staphylococci**

Antibiotics	<i>S. epidermidis</i>		<i>S. hominis</i>		<i>S. haemolyticus</i>		<i>S. lugdunensis</i>	
	S	R	S	R	S	R	S	R
Ciprofloxacin	15.38	84.62	20	80	57.14	42.85	50	50
Clindamycin	38.46	61.54	20	80	42.85	57.14	50	50
Daptomycin	100	100	100	100	42.85	57.14	100	100
Erythromycin	38.46	61.54	-	-	-	-	50	50
Gentamycin	61.53	38.47	40	60	28.57	71.43	50	50
Levofloxacin	15.38	84.62	20	80	57.14	42.85	50	50
Rifampicin	46.15	53.85	20	80	42.85	57.14	50	50
Linezolid	69.23	30.77	100	100	57.14	42.85	100	100
Teicoplanin	100	100	20	80	42.85	57.14	50	50
Tetracycline	53.84	46.16	20	80	42.85	57.14	50	50
Tigecycline	46.15	53.85	40	60	42.85	57.14	100	100
Trimethoprim	30.76	69.24	60	40	28.57	71.43	50	50
Vancomycin	100	100	40	60	42.85	-	100	100

CIP: Ciprofloxacin, CD: Clindamycin, DAP: Daptomycin, E: Erythromycin, GEN: Gentamicin, TE: Tetracycline, RIF: Rifampicin, LIN: Linezolid and SXT trimethoprim/sulfamethoxazole, LEV: Levofloxacin, TEC: Teicoplanin, TGC: Tigecycline, VA: Vancomycin. *S. epidermidis*: *Staphylococcus epidermidis*, *S. hominis*: *Staphylococcus hominis*, *S. lugdunensis*: *Staphylococcus lugdunensis*, *S. haemolyticus*: *Staphylococcus haemolyticus*

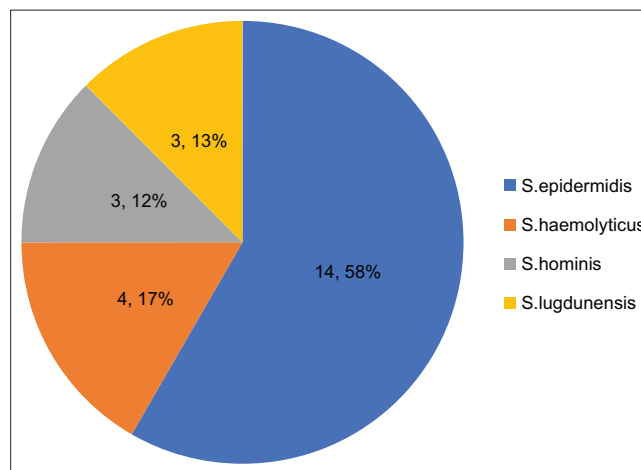
**Table 8: Percentage of isolates positive for mecA gene**

Total number of isolates	Percentage
19	67.85%

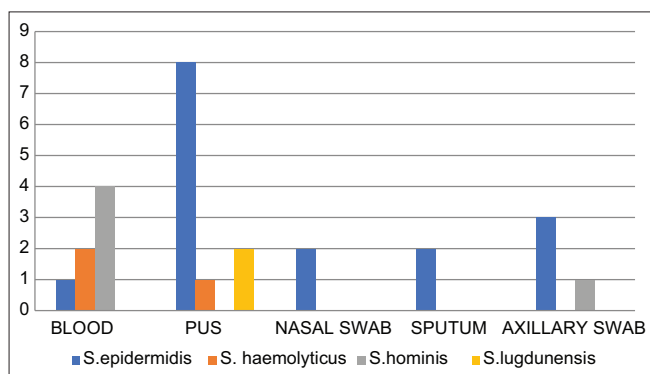
**Table 9: Biofilm producers**

Organisms	Number of biofilm producers	Percentage
<i>S. epidermidis</i>	14	58.33
<i>S. haemolyticus</i>	4	16.66
<i>S. hominis</i>	3	12.5
<i>S. lugdunensis</i>	3	12.5
Total	24	100

*S. epidermidis*: *Staphylococcus epidermidis*, *S. hominis*: *Staphylococcus hominis*, *S. lugdunensis*: *Staphylococcus lugdunensis*, *S. haemolyticus*: *Staphylococcus haemolyticus*



**Fig. 7: Biofilm producers**



**Fig. 6: Distribution of coagulase-negative staphylococci species in various clinical samples**

**CONCLUSION**

The present study showed the emergence and occurrence of CoNS causing infection in cancer patients at Malabar Cancer Centre, Thalassery.

A total of 28 CoNS were studied, in which four species were identified; *S. epidermidis* 46.42% were the most common species followed by *S. haemolyticus* 25%, *S. hominis* 17.85%, and *S. lugdunensis* 10.71%.

Antimicrobial sensitivity pattern of CoNS documented showed *S. epidermidis* (100%), *S. hominis* (100%), *S. lugdunensis* (100%), and *S. haemolyticus* (42.85%) higher sensitivity to daptomycin followed by linezolid [*S. epidermidis* [69.23%], *S. hominis* [100%], *S. lugdunensis* [100%], and *S. haemolyticus* [57.14%]].

mecA gene detection and biofilm production were detected in 67.85% and 85.71%.

All the biofilm forming strains isolated were multidrug resistant. CRA method is used to detect biofilm production in 28 isolates. It showed biofilm positivity for 24 isolates. In the previous study, similar results were obtained. A study by Shrestha *et al.*, 2012, showed that the susceptibility, specificity, and accuracy of the CRA method for biofilm production were higher than tube adherence method. Due to decreasing antibiotic sensitivity and host immune response, it is difficult to treat biofilm-producing staphylococci clinically. This severely limits to the treatment option for an effective therapy. Keeping in mind, the increasing prevalence of patients being infected with CoNS rapid diagnosis of these strains in microbiology laboratories is critical to implement proper antibiotic use and infection control strategies.

#### ACKNOWLEDGMENT

Nil.

#### AUTHORS' CONTRIBUTIONS

Dr. Sajani Samuel, Ms. Dilsha TK, and Dr. Parthiban R contributed substantially to the conception, design of the study, analysis, and interpretation of data. All authors discussed the results and commented on the manuscript. Dr. Sajani Samuel and Dr. Parthiban R drafted the final manuscript.

#### CONFLICTS OF INTEREST STATEMENT

None to declare.

#### FUNDING SOURCES

Nil.

#### REFERENCES

- Shrestha LB, Bhattarai NR, Khanal B. Antibiotic resistance and biofilm formation among coagulase-negative staphylococci isolated from clinical samples at a tertiary care hospital of Eastern Nepal. *Antimicrob Resist Infect Control* 2017;6:89.
- Dauner DG, Nelson RE, Taketa DC. Ceftobiprole: A novel, broad-spectrum cephalosporin with activity against methicillin-resistant *Staphylococcus aureus*. *Am J Health Syst Pharm* 2010;67:983-93.
- Kitti T, Seng R, Saiprom N, Thummeepak R, Chantratita N, Boonlao C, *et al.* Molecular characteristics of methicillin-resistant staphylococci clinical isolates from a tertiary Hospital in Northern Thailand. *Can J Infect Dis Med Microbiol* 2018;2018:8457012.
- Becker K, Heilmann C, Peters G. Coagulase-negative staphylococci. *Clin Microbiol Rev* 2014;27:870-926.
- Ligozzi M. Evaluation of the VITEK 2 system for identification and antimicrobial susceptibility testing of medically relevant gram-positive cocci. *J Clin Microbiol* 2002;40:1681-6.
- Freeman DJ, Falkiner FR, Keane CT. New method for detecting slime production by coagulase negative staphylococci. *J Clin Pathol* 1989;42:872-4.
- Jain A, Agarwal J, Bansal S. Prevalence of methicillin-resistant, coagulase-negative staphylococci in neonatal intensive care units: Findings from a tertiary care hospital in India. *J Med Microbiol* 2004;53 Pt 9:941-4.
- Munda V, Prasad A, Dinesh M, Maroof A. Isolation, identification and antibiogram of coagulase positive and negative staphylococci from bovine mastitis in Ranchi district. *Indian J Anim Sci* 2009;25:72-5.
- Martineau F, Picard FJ, Paradis S, Roy PH, Ouellette M, Bergeron MG. Development of a PCR assay for identification of staphylococci at genus and species levels. *J Clin Microbiol* 2001;39:2541-7.
- Uekötter A, Peters G, Becker K. Is there any rationale for treatment of *Staphylococcus aureus* infections with antimicrobials that are determined to be ineffective *in vitro*? *Clin Microbiol Infect* 2011;17:1142-7.
- Natoli S, Fontana C, Favaro M, Bergamini A, Testore GP, Minelli S, *et al.* Characterization of coagulase-negative staphylococcal isolates from blood with reduced susceptibility to glycopeptides and therapeutic options. *BMC Infect Dis* 2009;9:83.
- Khadri H, Alzohairy M. Prevalence and antibiotic susceptibility pattern of methicillin-resistant and coagulase-negative staphylococci in a tertiary care hospital in India. *Int J Med Sci Public Health* 2010;22:116-20.
- Sangwan J, Kumari S. Isolation, identification and antibiogram of coagulase negative *Staphylococcus* (CoNS) Isolated from various clinical samples at a tertiary care Teaching Hospital, Jaipur, India. *Int J Curr Microbiol Appl Sci* 2018;7:3048-59.